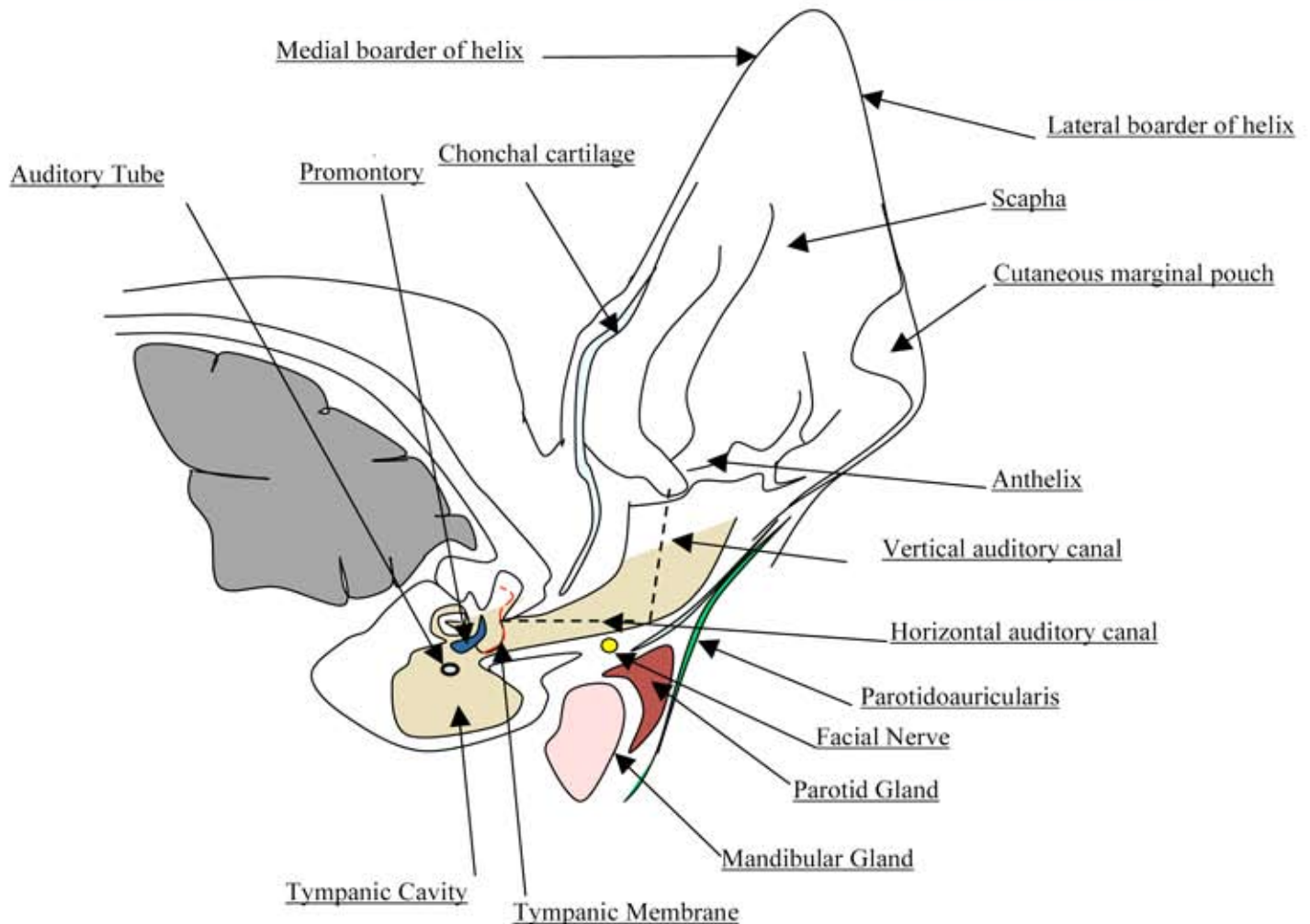


Darlene's Small Animal Ear Anatomy



*Diagram created and drawn by Darlene Hernandez RVT '09

- A. **Auditory Tube:** The tube that runs from the middle ear to the pharynx, also known as the Eustachian tube
- B. **Promontory:** A bulge in the medial wall of the middle ear overhanging the cochlea.
- C. **Chonchal cartilage:** The cartilage of the auricle. The **auricle** is the external structure of the ear or "pinna"
- D. **Medial (rostral) boarder of helix:** Medial outside rim of the auricle
- E. **Lateral (caudal) boarder of helix:** Lateral margin of the auricle containing the cutaneous marginal pouch
- F. **Scapha:** The curved depression separating the helix and anthelix of the auricle of the ear.
- G. **Cutaneous marginal pouch:** This pouch has no obvious function
- H. **Anthelix:** On the base of the pinna, a curved prominence of cartilage, parallel with and in front of the helix
- I. **Vertical auditory canal:** External structure of the ear canal. Made up of cartilage
- J. **Horizontal auditory canal:** The internal structure of the ear canal made up of cartilage and osseous tissue.
- K. **Parotidoauricularis:** A band of muscle fibers passing from the surface of the parotid gland to the auricle.
- L. **Facial Nerve:** Provides substantial sensory innervations to the concave surface of the scapha and part of the cavum conchae.
All of the muscles of the external ear are innervated by the facial nerve.
- M. **Parotid Gland:** the largest of the salivary glands
- N. **Mandibular Gland:** The submandibular gland accounts for 80% of all salivary duct calculi, possibly due to the different nature of the saliva that it produces and that its duct is up-sloping
- O. **Tympanic Membrane:** "eardrum" is a thin membranous partition that separates the external ear from the middle ear
- P. **Tympanic Cavity:** the major portion of the middle ear, consisting of a narrow air-filled cavity in the temporal bone that contains the auditory ossicles